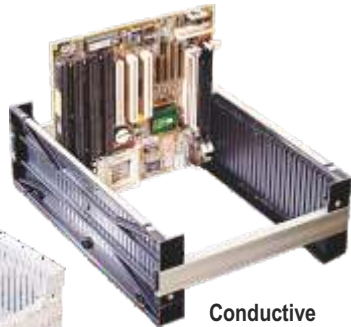
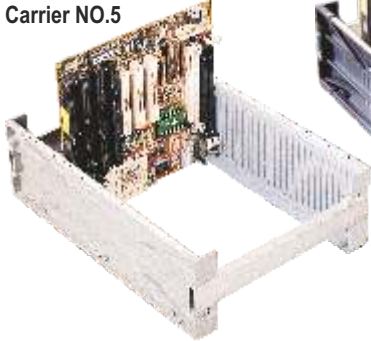




CONDUCTIVE AND NON CONDUCTIVE ADJUSTABLE PCB CARRIERS

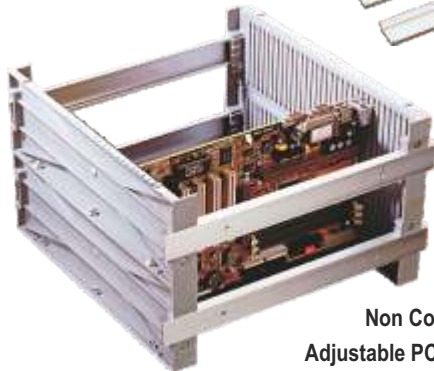
Non Conductive
Adjustable PCB
Carrier NO.5



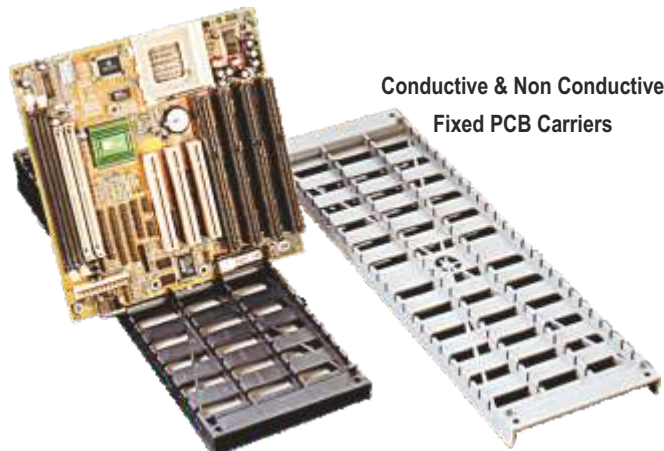
Conductive
Adjustable PCB
Carrier NO. 5



Multi Use



Non Conductive
Adjustable PCB Carrier No.6



Conductive & Non Conductive
Fixed PCB Carriers

ALKON adjustable PCB Carriers can be used for protection of boards during storage or transport in assembly line or integrate with automatic component insertion machines. They can be stacked one on each other. Each PCB Carrier has distinctly numbered on white background, 31 slots which can hold a maximum of 31 PCB's. Special Aluminium Guides have a unique design which remains Flush with PCB Carriers. They help in adjusting the width as per the Size of PCB,s Three lengths of aluminium guides are available i.e. 253 mm, 353mm and 553mm

ADJUSTABLE PCB CARRIER NO.: 5

Useful for small to medium Boards. Size of sides 350mm x 105mm Use different size of Aluminium guides to make the configuration as per the size of PCB.

Conductive Adjustable PCB Carrier NO.: 5

Set of 2 pcs. - Colour Black Art No.: **APCR5 - C**

Non Conductive Adjustable PCB Carrier NO.: 5

Set of 2 pcs. - Colour Grey Art No.: **APCR5 - N**

Order aluminium guides separately.

MULTI USE

Different sizes of PCB's can be fitted in two PCB Carriers as shown in the picture

ALUMINIUM GUIDES

Three Standard lengths Aluminium anodized guides are available Longer lengths useful for handling different sizes of PCB's are available on request.

LENGTH

253 mm Set of 2 pcs. Art No.: **APCRG -2**

353 mm Set of 2 pcs. Art No.: **APCRG -3**

553 mm Set of 2 pcs. Art No.: **APCRG -5**

ADJUSTABLE PCB CARRIER NO.: 6

Useful for medium sized Boards Size of sides 350 mm x 210 mm 2 Sets of Aluminium guides are required for Carrier No. 6

Conductive Adjustable PCB Carrier No.: 6

Set of 2 pcs. - Colour Black. Art No.: **APCR6 - C**

Non Conductive Adjustable PCB Carrier No.: 6

Set of 2 pcs. - Colour Grey. Art No.: **APCR6 - N**

Order Aluminium guides separately.

CONDUCTIVE & NON CONDUCTIVE FIXED PCB CARRIERS

Economical carriers for handling clinched SMD's, Soldered or bare boards of any Size.

Tapered slots to keep PCB's in taper position.

Easy to carry.

Size 458 mm x 140 mm

25 Slots

Black Colour for conductive. Art No.: **APCR1-C**

Grey Colour for non conductive. Art No.: **APCR1-N**

Packing : Fixed PCB Carrier are packed 5 pcs. in a box.



Art No.: **APCR 4 - C**
(Conductive Black)



Art No.: **APCR 4 - N**
(Non Conductive Grey)

It is a two side support PCB carrier of conductive or non conductive material for stronger card holding. Conductive PCB carrier are excellent PCB carrier for work benches. Easy to handle and does not occupy much space. Electrically conductive models are wholly earthed only by placing them on an earthed table.

- ▶ Holds boards on two contiguous edges.
- ▶ Nestable when not in use.
- ▶ Conductive PCB carrier in Black colour.
- ▶ Non conductive PCB carriers in Grey colour.
- ▶ Size : 207 x 273 x 95 mm.
- ▶ 25 grooves, 9mm Pitch, 3mm width.



Conductive Component Organiser

COMPONENT ORGANISER

Conductive Component Organiser provides systematic storage of electrostatic sensitive devices. It consists of a cabinet with 25 small drawers.

Size of Cabinet: 400mm x 250mm x 160mm

Size of the Drawers: 150mm x 75mm x 35mm.

Art No.: **ACO 25 - C Conductive**



Art No.: AWS12060



Art No.: AWS12060 SP

Today's electronic manufacturers need a workstation designed to help reduce harmful discharges from reaching vulnerable parts and assemblies. Part of the overall solution is to have a workstation designed with the proper grounding system to dissipate any charge away from the product you're producing. Our custom made workstations are designed to withstand the toughest of environments, allow total flexibility for future upgrades and meet your organization's ESD needs.

Available in standard sizes as below :

Art No.	Size
AWS 12060	Table Top Size 1200mm X 600mm over all height 1800mm
AWS 12060 SP	Table Top Size 1200mm X 600mm over all height 1500mm

Standard Features

- ▶ Workstation structure made from 20 x 40mm rectangular pipes of 18 Gauge.
- ▶ Available in powder coated grey colour.
- ▶ ESD Mat for table top with grounding cord.
- ▶ Universal spike protector 230V / 50Hz, 15 Amps with four sockets.
- ▶ Four conductive leveling screws for base with height adjustment facility.
- ▶ Foot rest for user convenience.
- ▶ 28 W flicker free swivel Light.
- ▶ Louver panel.
- ▶ Conductive Bins as required.
- ▶ Tool Tray with option of fitting on Left or Right side.
- ▶ Alkon Modular System with lock. 1 No. as per image above.
- ▶ Writing & Felt Board only for **AWS12060**.

Work Station for Non ESD application also available.

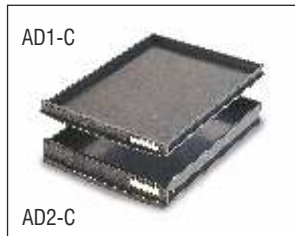


Modular system is an ideal storage system for Electrostatic sensitive devices based on standard modules which can be interlocked and stacked one on top of each other.

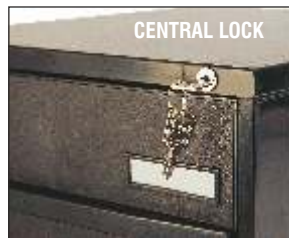
The basic system is around four drawer sizes which can be interchanged in the ratio of : 1 : 2: 3: 4.

All cabinets can be supplied with / without central lock.





SPECIAL STOPPERS
Special stoper is provided to stop the drawers when opened fully. To remove drawer from the cabinet lift the drawer up & remove from cabinet.



INTERNAL SIZE OF DRAWERS

- AD1-C 360 mm x 265 mm x 16 mm
- AD2-C 360 mm x 265 mm x 39 mm
- AD3-C 360 mm x 265 mm x 62 mm
- AD4-C 360 mm x 265 mm x 87 mm
- AMS12-C Modular system with 12 AD1-C Drawers
- AMS6-C Modular system with 6 AD2-C Drawers
- AMS4-C Modular System with 4 AD3-C Drawers
- AMS3-C Modular System with 3 AD4-C Drawers

MIXED DRAWER SYSTEM

Modular System can be fitted with different size of drawers in the same cabinet. For example, One AD4-C drawers can be replaced by two AD2-C drawer or one AD1-C drawer and one AD3-C drawer

INDICATOR

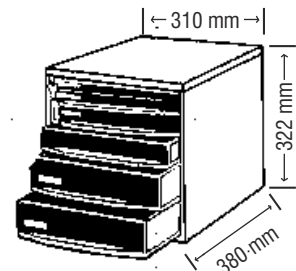
Name plate can be changed by pushing out the paper from the indicator as shown.

BASE UNIT

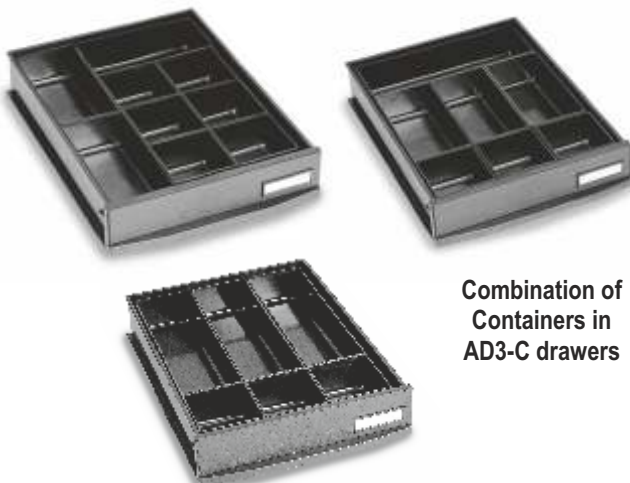
Base unit can be used with casters to make a mobile unit. One or more base unite can be used (Joined by set of four dowels provided) under the Modular system to raise the cabinet from the floor. Height of base unit is 35mm.

CENTRAL LOCKING SYSTEM

Is provided OPTIONALLY. Product numbers for cabinet with locks will be AMS12L-C , AMS6L-C, AMS4L-C etc.



CONDUCTIVE UTILITY CONTAINERS : FOR STORAGE OF SMALL PARTS
THREE SIZES OF CONTAINER IN BLACK COLOUR ARE AVAILABLE TO FIT IN AD3-C / AD4-C DRAWERS
AND ONE SIZE TO FIT IN AD2-C DRAWER



SIZES OF CONTAINERS :

- Art No. UC1-C** Size 82 x 82 x 55 mm
12 CONTAINERS FIT IN ONE AD3-C / AD4-C DRAWER
- Art No. UC2-C** Size 170 x 82 x 55 mm
6 CONTAINERS FIT IN ONE AD3-C /AD4-C DRAWER
- Art No. UC3-C** Size 255 x 82 x 55 mm
4 CONTAINERS FIT IN ONE AD3-C / AD4-C DRAWER
- Art No. UCD2-C** Size 258 x 85 x 37 mm with 2 partition
6 CONTAINERS FIT IN ONE AD2-C DRAWER



SB7-C

SB4-C

SB5-C

SB3-C

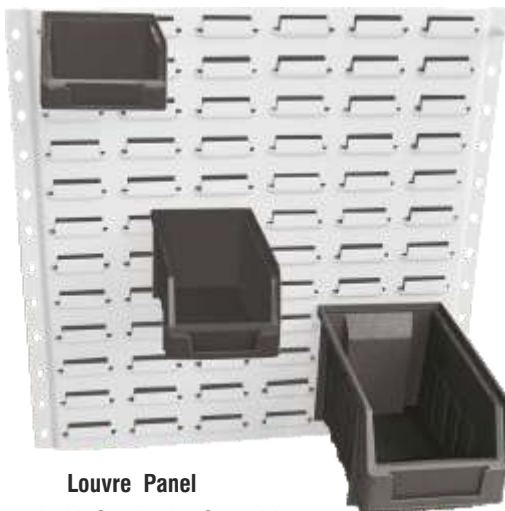
SB2-C

SB6-C

SB1-C

SB5-C with vertical partition
Conductive

SB4-C with horizontal partition
Conductive



Louvre Panel

Mounted with Conductive Supra bins

Made from Conductive Polypropylene.

- ▶ Strong rear lip for use with louvred panels.
- ▶ Strong heavy duty, with reinforced base side & stacking rim.
- ▶ Resistant to most industrial solvents, withstands higher temperatures.
- ▶ Clear access to contents.
- ▶ All bins with identification card holder slots.
- ▶ Incorporates a safety stop feature in SB 4-C, SB 5-C, SB 6-C, at the back for use in shelves.

Colour - BLACK.

Art No.	Outside Dimensions in mm			Inside Dimensions in mm		
	Length	Width	Height	Length	Width	Height
SB1-C	125	100	60	117	80	52
SB2-C	170	100	85	157	80	75
SB3-C	220	130	125	200	115	115
SB4-C	290	178	143	265	155	130
SB5-C	290	363	145	265	340	130
SB6-C	440	180	145	415	154	130
SB7-C	435	425	215	405	380	208
SB8-C	600	425	300	530	375	290

All dimensions in mm approx.

SUPRA BIN PARTITIONS CONDUCTIVE

Horizontal partition for SB4-C & SB6-C

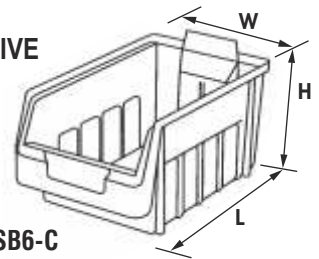
Art No.: **HP SB4/6-C**

Vertical partition for SB4-C & SB5-C

Art No.: **VP SB4/5-C**

Vertical partition for SB6-C Art No.: **VP SB6-C**

Vertical partition for SB7-C Art No.: **VP SB7-C**



STACKING

Supra Bins are designed to be stacked one on top of each other.

LOUVRE PANELS

They are made from 1.5mm CRCA steel and are powder coated in grey colour. They come in four sizes. They can be fitted on walls or on stand on table with our special stands.

Art No.: **SBLP1** Size 457 mm X 457mm

Art No.: **SBLP2** Size 457mm X 610mm

Art No.: **SBLP3** Size 457mm X 914mm

Art No.: **SBLP6** Size 457mm X 1829mm

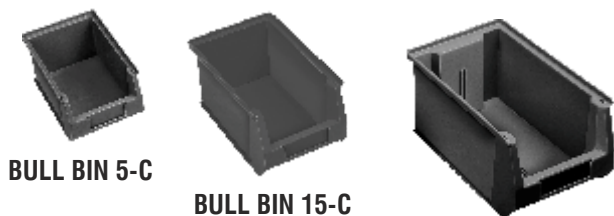
Different Types of Stands & Trolleys are available.

ALKON BULL BINS - CONDUCTIVE



Made from Conductive Polypropylene.

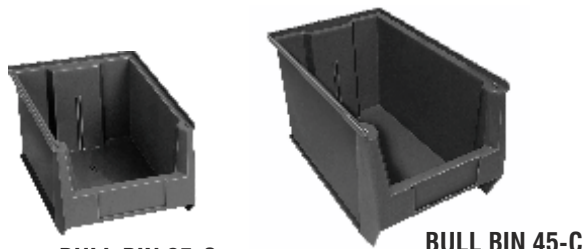
- ▶ Provision for vertical partitions to increase storage options.
- ▶ Full length rear lip supports provided for hanging bins on louvered panels or rails.
- ▶ Resistance to most industrial solvents, withstands higher temperature.
- ▶ Anti skid strips provided at the base.
- ▶ Extra wide stacking base for secure stacking.
- ▶ Tapered front & rear bottom for easy movement on conveyers.
- ▶ Stopper prevents stacked bins from shifting forward.
- ▶ Extra wide label slot for easy content identification.
- ▶ Colour - BLACK.



BULL BIN 5-C

BULL BIN 15-C

BULL BIN 25-C



BULL BIN 35-C

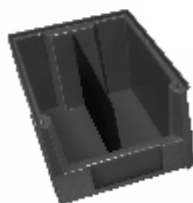
BULL BIN 45-C



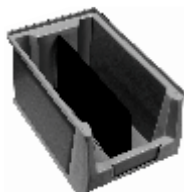
BULL BIN 55-C



BULL BIN 45-C



BULL BIN 35-C



BULL BIN 25-C

BULL BIN fitted with vertical partitions.

Art No.	Outside Dimensions in mm			Inside Dimensions in mm		
	Length	Width	Height	Length	Width	Height
BULL BIN 5-C	168	102	74	145	86	66
BULL BIN 15-C	201	125	101	178	105	92
BULL BIN 25-C	229	150	126	192	128	114
BULL BIN 35-C	300	208	158	255	185	145
BULL BIN 45-C	348	210	200	305	187	185
BULL BIN 55-C	510	310	200	480	280	195

All dimensions in mm approx.

BULL BIN PARTITIONS CONDUCTIVE

Vertical Partition for BULL BINS. Available as an accessory to increase storage options

BULL BIN 25 VERTICAL PARTITION

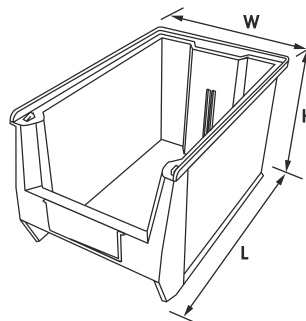
Art No.: **VP-BULL BIN25-C**

BULL BIN 35 VERTICAL PARTITION

Art No.: **VP-BULL BIN35-C**

BULL BIN 45 VERTICAL PARTITION

Art No.: **VP-BULL BIN45-C**





PSB-401C

PSB-402C

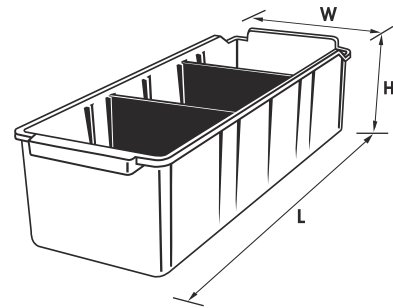
PSB-403C

PSB-404C

PSB-405C

MADE FROM CONDUCTIVE POLYPROPYLENE

- ▶ Designed to fit roll post shelving systems.
- ▶ Five standard bin sizes to suit 400 mm deep shelving.
- ▶ Resistant to most industrial solvents, withstands higher temperatures.
- ▶ Integral back stop for clear viewing of PANDA BIN contents.
- ▶ Partitions are notched to ensure positive location within the bins.
- ▶ PANDA BINS feature a small handle to allow maximum area of the front face for sticking identification labels.
- ▶ The PANDA BINS use a unique design for added strength.



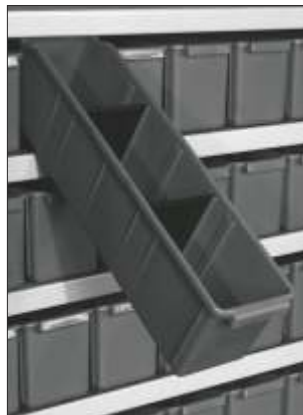
BIN DIMENSIONS

SR NO.	ART NO.	Outer Dimensions			Inner Dimensions			No. Of Partitions with each bin	Effective Height	Std. Pack
		Length	Width	Height	Length	Width	Height			
1.	PSB-401C	415	100	60	393	86	55	3	55	24
2.	PSB-402C	415	100	110	393	86	105	2	105	24
3.	PSB-403C	415	150	110	393	136	105	2	105	12
4.	PSB-404C	415	220	135	393	210	130	2	130	12
5.	PSB-405C	415	300	135	393	282	130	2	130	6

All dimensions in mm Approx



Roll Post Shelving System



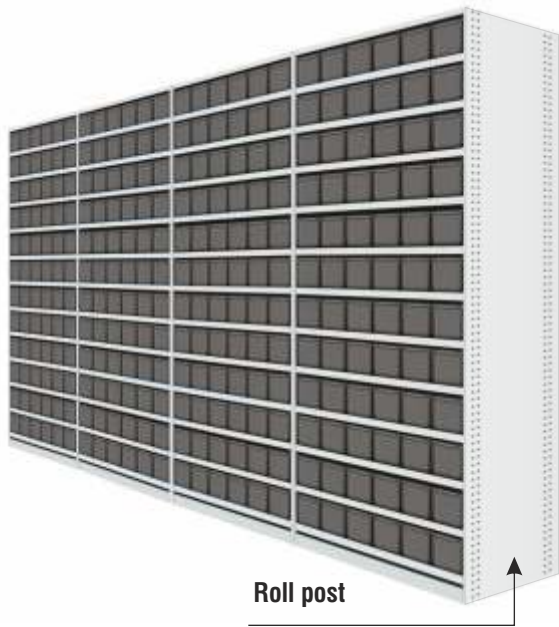
Integral back stop allows viewing of contents



Snap-in Partition Fitted in PANDA SHELF BIN



Door for panda shelving systems



Roll posts

Panda Shelving Systems have one-piece solid uprights with a rolled front edge for additional strength, safety and aesthetic appeal.

Roll posts are available in 1875 mm height which is suitable for 400mm deep shelves.

Shelves

Shelf levels are easily adjusted in 25mm increments and are held into position with the use of nuts / bolts. Shelves are available in 400mm depth having 900mm width as standard.

Back plate

Back panel provide additional stability and prevents dust.



Kick plates

All shelving bays are fitted with solid kick plates, which prevent unwanted material to enter inside the base of the shelving unit and it looks aesthetically good.



Flexibility

Panda shelving systems are fully enclosed and are designed to suit your ever changing needs. The flexibility of the product accommodates additions or alterations at any stage, with a minimum of fuss or disruption to your day to day operation.

Finish

All Panda shelving components are manufactured in 0.8mm CRCA steel and are duly powder coated in light grey colour.



Panda Shelving Systems



Shelf load Capacity as per the UDL (Uniformly Distributed Load)

SHELF	Shelf Size in mm			UDL
	Depth	Width	Height	
ASUS 400	400	900	30	60 Kg.

All dimensions in mm approx.



STANDARD SIZE:

System Depth (mm) 400

System Height (mm) 1875

System Width (mm) 900

BINS / SHELVING BODIES / SHELVES /

KICK PLATES / DOORS can be ordered separately

as per your requirement.

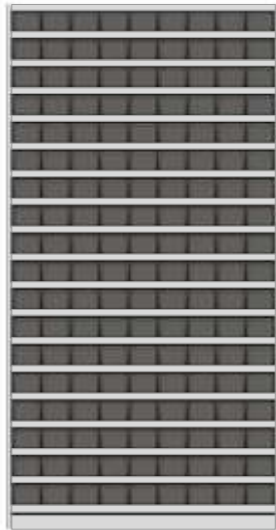
For details of doors please refer page No. 27 .

SHELVING SYSTEMS ORDERING CHART

Shelving Unit Art No.	Shelving Body			Kick Plate Art No.: ASUKP	Shelves		Panda Shelf Bins		System Udl Uniform Distributed Load
	Art No.	Roll Post	Back Plate		Art No.	No. Of Shelves	Art No.	No. Of Bins	
ASU-31C	ASUB-184	2 Nos.	1 Set	1 No	ASUS 400	19 Nos.	PSB-401C	162 Nos.	1140 Kgs.
ASU-32C	ASUB-184	2 Nos.	1 Set	1 No	ASUS 400	13 Nos.	PSB-402C	108 Nos.	780 Kgs.
ASU-33C	ASUB-184	2 Nos.	1 Set	1 No	ASUS 400	13 Nos.	PSB-403C	72 Nos.	780 Kgs.
ASU-34C	ASUB-184	2 Nos.	1 Set	1 No	ASUS 400	11 Nos.	PSB-404C	40 Nos.	660 Kgs.
ASU-35C	ASUB-184	2 Nos.	1 Set	1 No	ASUS 400	11 Nos.	PSB-405C	30 Nos.	660 Kgs.



ASU 31C



ASU 31C Shelving Unit Consists of

- ▶ 1 Set of ASUB 184 Shelving Body
- ▶ 19 Nos. Shelves - Art No.: ASUS 400
- ▶ 9 Nos. PSB-401C Bins on each shelf
- ▶ Total 162 Nos. PSB-401C Bins

ASU 32C



ASU 32C Shelving Unit Consists of

- ▶ 1 Set of ASUB 184 Shelving Body
- ▶ 13 Nos. Shelves - Art No.: ASUS 400
- ▶ 9 Nos. PSB-402C Bins on each shelf
- ▶ Total 108 Nos. PSB-402C Bins

ASU 33C



ASU 33C Shelving Unit Consists of

- ▶ 1 Set of ASUB -184 Shelving Body
- ▶ 13 Nos. Shelves - Art No.: ASUS- 400
- ▶ 6 Nos. PSB-403C Bins on each shelf
- ▶ Total 72 Nos. PSB-403C Bins

ASU 34C



ASU 34C Shelving Unit Consists of

- ▶ 1 Set of ASUB 184 Shelving Body
- ▶ 11 Nos. Shelves - Art No.: ASUS 400
- ▶ 4 Nos. PSB-404C Bins on each shelf
- ▶ Total 40 Nos. PSB-404C Bins

	PSB-401C BIN SIZE <table border="1"> <thead> <tr> <th>Length</th> <th>Width</th> <th>Height</th> </tr> </thead> <tbody> <tr> <td>415 mm</td> <td>100 mm</td> <td>60 mm</td> </tr> </tbody> </table>	Length	Width	Height	415 mm	100 mm	60 mm
Length	Width	Height					
415 mm	100 mm	60 mm					
	PSB-402C BIN SIZE <table border="1"> <thead> <tr> <th>Length</th> <th>Width</th> <th>Height</th> </tr> </thead> <tbody> <tr> <td>415 mm</td> <td>100 mm</td> <td>110 mm</td> </tr> </tbody> </table>	Length	Width	Height	415 mm	100 mm	110 mm
Length	Width	Height					
415 mm	100 mm	110 mm					
	PSB-403C BIN SIZE <table border="1"> <thead> <tr> <th>Length</th> <th>Width</th> <th>Height</th> </tr> </thead> <tbody> <tr> <td>415 mm</td> <td>150 mm</td> <td>110 mm</td> </tr> </tbody> </table>	Length	Width	Height	415 mm	150 mm	110 mm
Length	Width	Height					
415 mm	150 mm	110 mm					
	PSB-404C BIN SIZE <table border="1"> <thead> <tr> <th>Length</th> <th>Width</th> <th>Height</th> </tr> </thead> <tbody> <tr> <td>415 mm</td> <td>220 mm</td> <td>135 mm</td> </tr> </tbody> </table>	Length	Width	Height	415 mm	220 mm	135 mm
Length	Width	Height					
415 mm	220 mm	135 mm					
	PSB-405C BIN SIZE <table border="1"> <thead> <tr> <th>Length</th> <th>Width</th> <th>Height</th> </tr> </thead> <tbody> <tr> <td>415 mm</td> <td>300 mm</td> <td>135 mm</td> </tr> </tbody> </table>	Length	Width	Height	415 mm	300 mm	135 mm
Length	Width	Height					
415 mm	300 mm	135 mm					

ASU 35C



ASU 35C Shelving Unit Consists of

- ▶ 1 Set of ASUB 184 Shelving Body
- ▶ 11 Nos. Shelves - Art No.: ASUS 400
- ▶ 3 Nos. PSB-405C Bins on each shelf
- ▶ Total 30 Nos. PSB-405C Bins